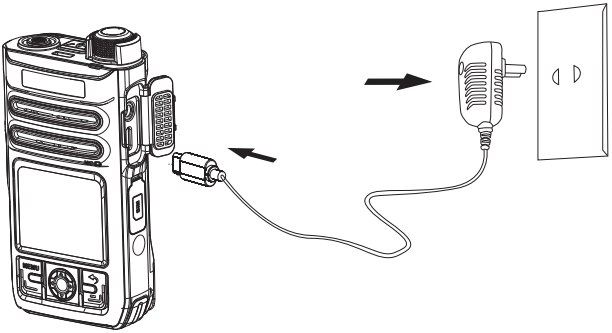




### Battery Information

- The battery pack is not fully charged when purchased, please charge before the first usage.
- Do not short circuit the battery to avoid damaging the battery, generating heat and causing a fire.
- Do not place the battery at a high temperature area or throw it into a fire to avoid an explosion.
- If the battery is not used for a while, discharge it and store it in a dry, dark and cool place.
- Stop using the battery and cradle when it is damaged or significantly aged.
- Return the used batteries to the supplier or to the designated collection point, do not dispose indiscriminately.



If the battery is damaged, avoid touching the contents. If it gets contaminated with the skin, rinse it with plenty of water. If necessary, ask for medical advice.

### Charger Information

- To improve charging efficiency and ensure charging safety, please use 100-240V AC.
- Do not short-circuit the charger or it would cause electric shock, smog and damage to the charger.
- Do not use the charger when the cable is damaged, it may cause fire and electric shock.
- Please clean the dust accumulated on the power outlet over time.
- Do not disassemble or modify the charger. It may cause electric shock, fire or damage to the charger.
- Do not use the charger in places with high temperature or it may cause electric shock, fire or damage to the charger.
- Do not touch the charger, battery or power outlet with wet hands or it would cause electric shock.
- Do not place heavy objects on the power cable or attempt to modify the power cable, otherwise, it may cause electric shock or fire.
- Unplug the power plug from the socket before cleaning and maintenance. Hold the charger when pulling the plug. Rough handling of the power cable could damage it and may cause electric shock or fire when in use.

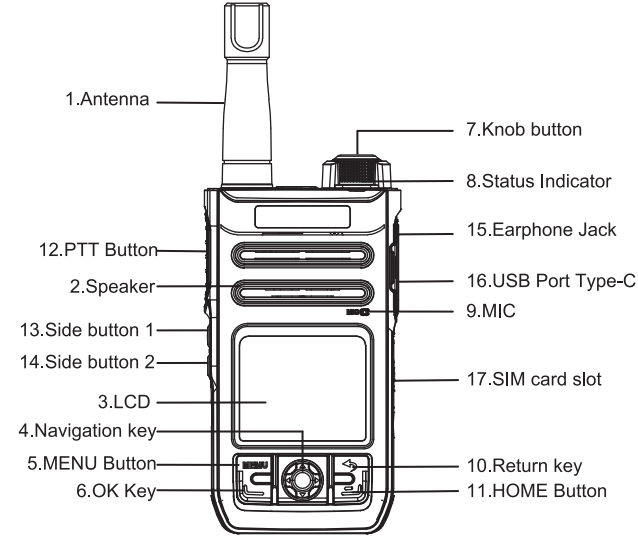
### Charging the Battery

Charge the battery with the specified charger and charge the battery as follows:

1. Insert the Type-C plug of the switching power supply into the Type-C jack on the right side of the radio.
2. When the radio is turned on, connect the power supply to the AC power output socket. You can see that the radio status indicator (LED) turns red and flashes slowly, indicating that the power supply is normally connected. When the status indicator (LED) turns from red to green light and flashes slowly, it means fully charged (The battery capacity is above 90%).
3. When the radio is switched off, connect the power supply to the AC power output socket. Firstly, the screen will light up and display the battery capacity icon. You can also see the radio status indicator (LED) turns stable red light, which means the power supply is normally connected; when the radio status indicator (LED) turns from red to a stable green light it indicates fully charged (The battery capacity is above 90%).
4. After finish charging, remove the power plug and the Type-C charging cable from the power outlet. (For best result: Please turn off the radio when charging)

### Radio Overview

This network radio can be used in the LTE 4G network. The radio has powerful performance and professional functions. With the high-speed broadband connection brought by the latest 4G technology, this radio will perform remarkably well in any business-critical environment.



### Intercom Introduction

Parts	Functions
1.Antenna	LTE 4G main antenna
2.Speaker	Electrical signal is converted into acoustic signal
3.LCD	Display User interface
4.Navigation key	In standby, you can select the application on the interface.

5.MENU Button	Enter menu
6.OK Key	Confirm button
7.Knob button (Volume button/Long press to switch it On/ Off)	Press and hold the button for 3 seconds to On/ Off, rotate the knob clockwise to increase volume, rotate counterclockwise to decrease volume Short press to on/off screen.
8 Status Indicator	View product specifications in detail
9.MIC	Convert audio signal to electric signal
10.Return key	Return to the previous menu, no effect under the main menu; During Voice call mode, short press to exit.
11.HOME Button	Press to return to the main menu on any page (except the main menu)
12.PTT Button	To trigger and release call: Press to talk and release to finish.
13.Side button 1	Short press to continuously broadcast the current group, current user. Long press to enter one key alarm.
14.Side button 2	Short press to switch groups. Long press to change the keyboard
15.Earphone Jack	3.5mm
16.USB Port Type-C	Used to connect to computer PC software or to charge
17.SIM card slot	Micro SIM

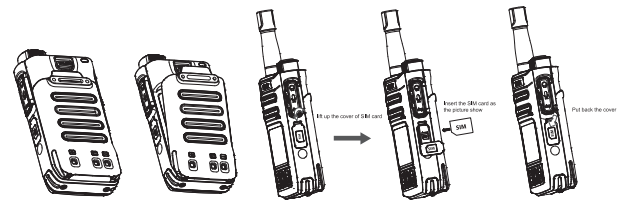
### Getting started

#### Install battery and SIM card

1. Open the SIM card slot.
2. Place the SIM card into the SIM card slot in the right direction.
3. Lock the SIM card slot.
4. Hold the battery and align the bottom of the battery against the bottom of the transceiver.
5. Hold the battery and push the battery down until the battery is locked.

Note:

- Please turn off the radio before inserting or removing the SIM card.
- Avoid touching the metallic area of the SIM card to prevent loss and damage to the information in the card and place it away from electromagnetic fields.



### Remove the battery

1. To remove the battery pack, push the battery latch-up.
2. When the battery is released from the terminal, remove the battery.

### Basic Operation

Power On and Power Off

Press and hold the Knob button for 3 seconds until power ON. To power OFF, press and hold the button. A window will pop up on the display, choose "Power OFF" and press ok to power OFF the radio.

### Display Off

When the screen is lit up, short press the knob button to enter the off-screen state otherwise the radio display will automatically switch off after a period of inactivity.

### Display On

Short press the knob to wake up the display.

### Status Bar

The status bar displays battery capacity, time, SIM card, registered network status information, etc.

### Push-To-Talk function

After the start-up, the radio will automatically enter the default waiting group.

### Dynamic PTT

On the PTT screen, press DOWN on the navigation panel to enter the group lists, long press OK key to enter the group member list. Under the group member list, you can select the person who you want to call. Press the PTT button to start Dynamic PTT. Consequently, press the PTT button to talk and release PTT to listen. Press OK key to hang up. Dynamic PTT will also end automatically after 15secs if there is no conversation.

### Group Change

On the PTT screen, press DOWN on the navigation panel to enter the Group list. After choosing the desired group, press OK key to change group.

### Short cut: Group Change

Short pressing the side button 2 to change to the desired group and there will be a voice announcement on the Group name. At the same time, the group becomes a Current group - Press PTT to start talking.

### Emergency Alarm (SOS)

Note: This function would be invalid if the Virtual Trunk Dispatch Console did not register an alarm number to the radio ID.  
Press and hold the side button 1 for 3 seconds to activate the SOS function.

### Enter the APK settings

On the PTT screen, press UP on the navigation panel. It will display SETTING which can be used to check personal information OR change voice call settings/ sleep mode/ PTT incoming call options/ Dynamic PTT options/ PTT to activate screen settings.

### ROM settings

Short press the MENU button to enter the ROM setup menu. You can set the Network, WLAN, BT, Location, Boot sound, phone status, etc.  
Establish a wireless connection  
Set up the WLAN connect

### WLAN Connect

1. Under "Settings", press the UP/DOWN key to choose WLAN, press OK to confirm and enter the WLAN mode, now you can setup to connect the WLAN.
2. Under the WLAN, press OK button to turn ON or turn Off the WLAN. And you can see the "Connected WLANs/Available WLANs /saved WLANs".
3. Press the UP/DOWN button to choose the WLAN you wanted, input the correct password and press OK button to confirm and connect.

### Set up the Bluetooth connection

1. Under "Settings", press OK button and press UP/DOWN button to choose BT, and then press OK to enter BT settings.

2. Under BT, press OK button to turn on the BT and your radio will show the BT available list within the range.
3. Press UP/DOWN button to choose the device you want to connect, press OK to connect;
  - Paired Device-Bluetooth list: Devices which already been paired previously or currently paired. Long press OK to delete the Paired device.
  - Available Device-Bluetooth list: Device/s available for pairing in the surrounding vicinity
4. If you switched on "Discoverable", other devices may be able to search your Bluetooth.
5. When entering Bluetooth password, press OK to confirm and enter the keyboard, you could long press the side key 2 to switch the Input

### Safety Precautions

When using VT28, please hold the Device in a correct position as if using a lined telephone. Talk through the microphone and make sure the Device is at an appropriate distance away from your body. Some people may be prone to seizures or dizziness under flashing lights (such as watching TV). If you have a similar medical history of illness, consult your doctor before using the flash function.  
Keep the device away from children.

### Road safety warnings and precautions

Please follow the relevant traffic safety regulations when driving.

### Medical Equipment

Care should be taken when using the radio next to certain medical devices such as pacemakers. Keep a distance of at least 20 cm between the radio and these medical devices. Do not put the radio in your chest pocket. Hold VT28 to the ear at the opposite side of the body where the pacemaker is implanted to reduce potential interference. If necessary, please turn off the radio. If you have any other questions, please consult the medical equipment manufacturer before using. Some digital radios may interfere with certain hearing aids. If these disturbances occur, contact the hearing aid manufacturer for a solution. If you have any other medical equipment (such as implanted cochlea), consult with the manufacturer to ensure that these devices can shield the surrounding RF signals.  
In places with special requirements such as hospitals or recuperation, please pay attention to the restrictions on the use of radios. If necessary, please turn off the radio.

### Your Radio

For best performance, please use original accessories as specified by the factory. Use of any unapproved accessories may affect the radio performance and violate the warranty terms and the relevant national regulations on communication products and may even cause personal injury.  
Turn off the devices when cleaning and use a clean Anti-static cloth. Do not use any chemical such as detergent to clean the surface of the device. As the device will generate an electromagnetic field, do not place it near storage media, such as a hard disk.